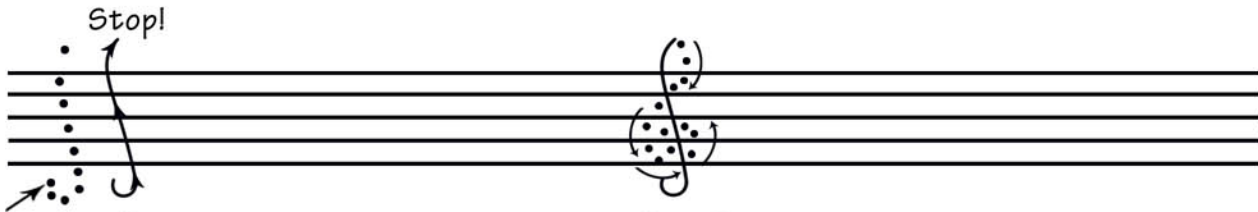


# Music Notation

## Staves and Clefs Continued

### 1. Learn to draw the treble clef.



Step 1:  
Begin at the bottom of the clef, below the staff. Trace over the dots and pause at the top of the clef.

Step 2:  
Begin the second stroke with a downward curve to the left. Make sure you intersect your vertical stroke at the second line from the top. Stop in the middle of the first space.

### 2. Practice drawing the treble clef.

After the first stroke and before starting the second downward stroke, be sure to pause for a moment without lifting your pencil off the paper. By pausing, you'll avoid round loops at the top of the clef and draw more of a point.



### 3. Name the notes on the treble clef.

