

# Music Notation

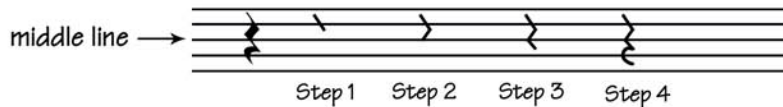
## Drawing Rests

### Rests

For every notatable duration of sound, there is an equivalent notatable duration of silence. These notated, “rhythmic silences” are called rests.

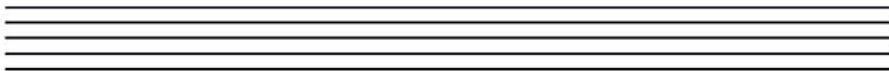
### The Quarter Rest

The quarter rest represents the same rhythmic duration as a quarter note.



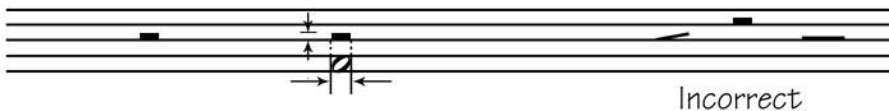
1. To draw a quarter rest, begin in the middle of the top space and draw a diagonal line down and to the right. Stop in the middle of the next space.
2. Next, draw a diagonal line down and to the left. Stop on the middle line.
3. Now draw another diagonal line to the right stopping in the middle of the next space..
4. Finish drawing the quarter rest by drawing the letter “c.” Be sure your “c” stops in the middle of the first space.

Practice drawing quarter rests here.

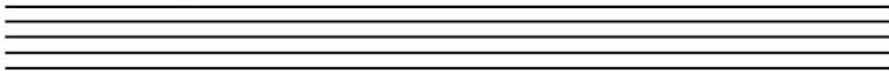


### The Half Rest

The half rest is the counterpart of rhythmic silence to the half note. It is a solid rectangular symbol that sits on the third or middle line of the staff. It is as wide as a note-head and is half a space thick.

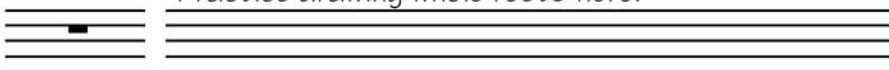


Practice drawing half rests here.



### The Whole Rest

Practice drawing whole rests here.



The whole rest is also a solid rectangular symbol as wide as a note-head and half the distance of a space. The whole rest hangs from the fourth line. When the whole rest represents an entire measure’s rest, it is centered within the measure.