

# Music Notation

## Drawing Notes

### Note-heads

There are two types of note-heads, open and Closed.  
Notice that both are oval shaped, lean slightly to the right,  
and occupy one space from top to bottom.



The oval shape, together with the slight lean, gives the note-head an appearance that implies motion to the right.

### Compare the notes below.

Those with round note-heads are static and therefore tend to “stop” the reader’s eye.  
Those with note-heads that lean slightly to the right actually help “move” the eye across the page.

round: incorrect

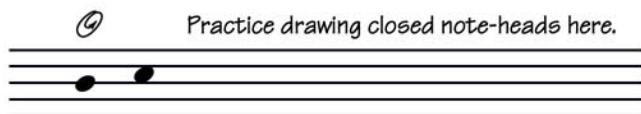


oval: correct



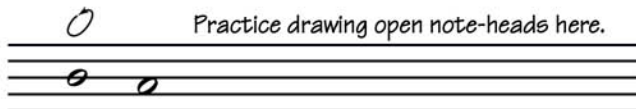
### Drawing note heads

To draw closed note-heads, start at the top and draw, in a counter-clockwise direction, the outline of the note-head.  
Fill in the oval by continuing the counter-clockwise, circular, motion of your pencil.



Note-heads on a line must be centered on that line.

For open note-heads, start at the top and draw in a counter-clockwise direction.  
Finish where you began. Both whole notes and half notes may be drawn in this manner.



Note-heads in a space must be centered between the two adjacent lines.