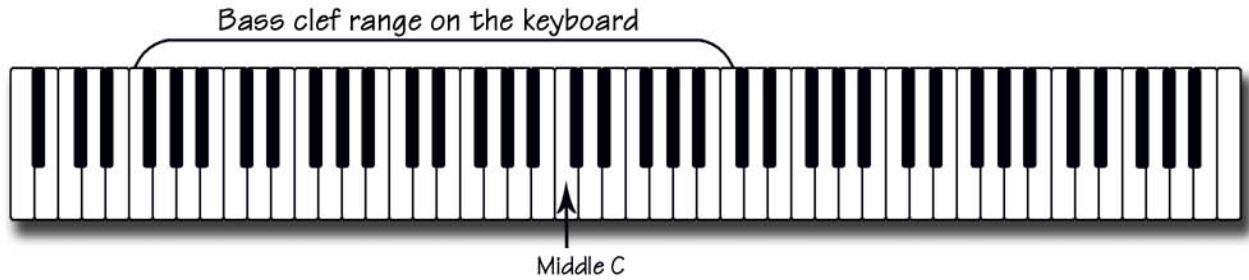


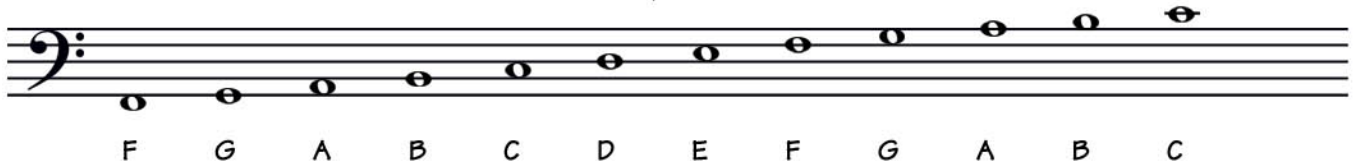
Music Notation

Staves and Clefs Continued

The Bass Clef

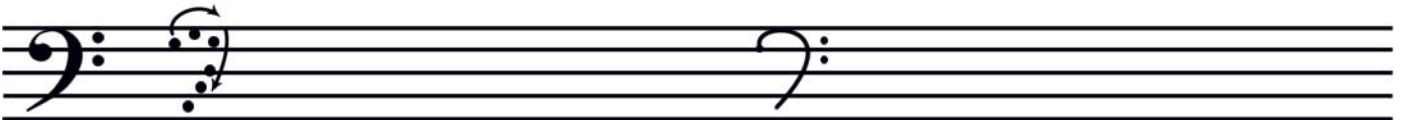


The bass clef is also called the F clef because it wraps around the note F.



These are the notes or pitches on the bass clef staff.

1. Learn to draw the bass clef.



Step 1: Begin by drawing a dot on the fourth line from the bottom. Trace over the dots being careful to just touch the top line. Stop in the middle of the first space.

Step 2: Draw two small dots in the middle of the third and fourth spaces. Make sure they are aligned vertically and 1/2 of a staff space to the right of the body of the clef.

2. Practice drawing the bass clef.



3. Name the notes on the bass clef.

