

# Music Notation

## Staves and Clefs Continued

### The Alto Clef

#### 1. Learn to draw the alto clef.

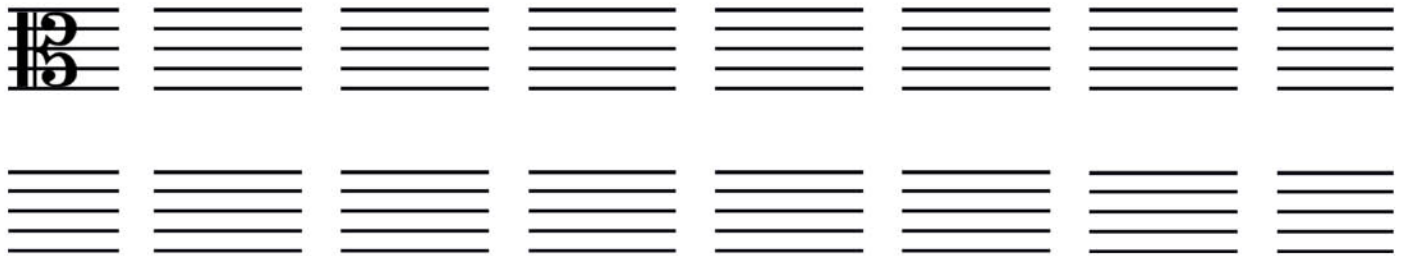
When drawing the alto clef, try to recreate as best you can, its printed or engraved form.



Step 1: Begin by drawing two vertical lines. The first one should be roughly twice as thick as the second one. Stay inside the top and bottom lines of the staff.

Step 2: Draw two half circles resembling a backward "C". Lift your pencil after the first one. Make sure you do not cross the middle line but instead "point" to it.

#### 2. Practice drawing the alto clef.



#### 3. Name the notes on the alto clef.

