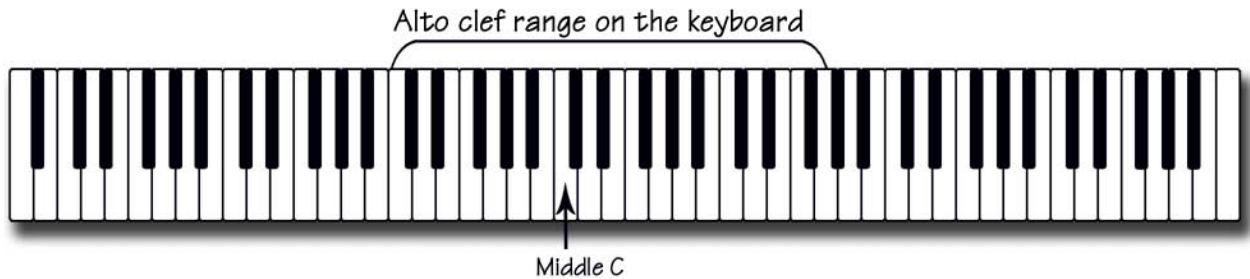


# Music Notation

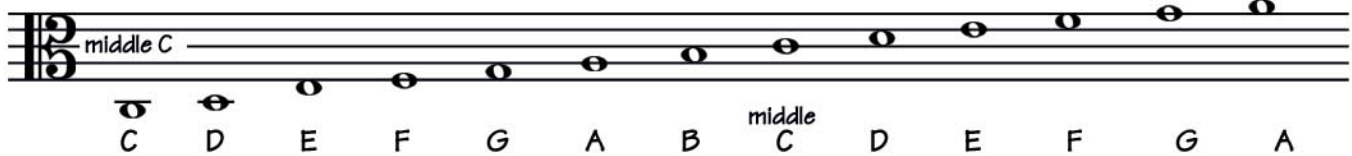
## Staves and Clefs Continued

### The Alto Clef

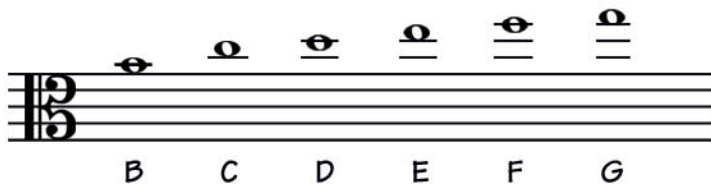
The alto clef is used primarily in string and orchestra writing. Music for the viola is written in the alto clef.



The alto clef is also called the C clef because it points to the note C.

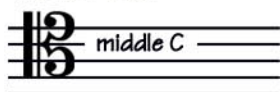


These are the notes or pitches on the alto clef staff.



The alto clef uses only a few ledger lines above the staff. When notes go higher on the staff, the treble clef is added for easier reading.

### Tenor Clef



The alto and tenor clefs are the only clefs that may be moved on the staff. Middle C is always assigned to the line located by the center of the clef.